

Software

# PowerStudio SCADA DELUXE

Power .circutor.com studio *Deluxe*  
SCADA

Energy supervision, maintenance, allocation of costs, with CIRCUTOR's equipment and other equipment with Modbus communications.

## Drivers for CIRCUTOR devices

CVMk2, CVM MINI, CVM NRG96, CVM 96, CVM 144, CVM BC, CVM BD, CVMk, CVMk-HAR, CVM NET, CVM R8, CVM SP, DH96, EDMk, MKD, MK, MP3, MP4, PowerNet, TR8, TR16, CIRWATT, LM24-M, LM50, LM4-I/O, LM4A-2IO-M, RGU-10, CBS-4, CBS-8, CDR-8, RRM-C, QNA, computer 14D, computer PLUS, generic MODBUS, IP CAMERA, EDS, R440-TCP

## Features

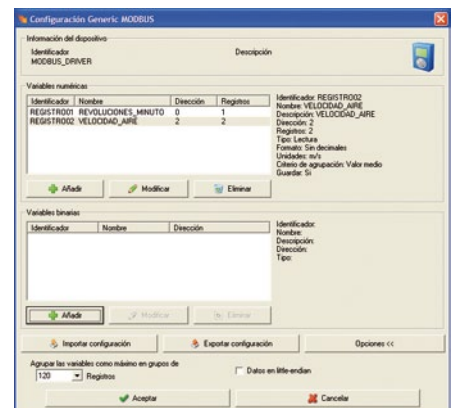
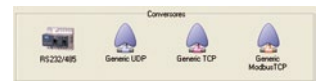
As well as all the features offered by **Power Studio SCADA**, the **DELUXE** version aims to cover devices with standard connections. The Power Studio Scada Deluxe version, as well as incorporating all the **CIRCUTOR drivers**, features generic connections, with the aim of being able to communicate with other devices that respond to the Modbus RTU or Modbus TCP protocol through a generic UDP, TCP connection or, in consequence, Modbus TCP.

As well as being able to establish such connections, it can program the memory map of any device on the market with Modbus communications through the generic *driver* assistant. In other words, the user can define the registers desired from the Modbus equipment one by one, thus defining a new *driver* adapted to the application's needs..

Both numerical and binary variables can be configured in the generic Modbus driver.

Once the registers are entered in the Modbus driver, said variables can be registered as historical records and can be used to create SCADA monitoring screens, generate tables and graphics, parameterise alarms and implement customised reports.

Once the variables are integrated in the system, they can be exported to other systems via XML and even through OPC with the additional **OPC Server** module or the data rate of **PowerStudio SCADA Deluxe** can be converted to SQL with **SQL Data Export**.



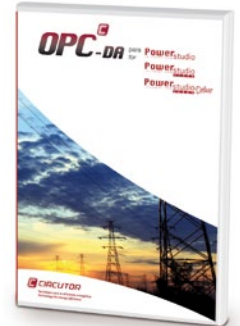
## References

Type	Code
PowerStudio Scada DELUXE	M90241

Software

# OPC-DA PS/PSS/PSSD

Integration of CIRCUTOR units with other market software

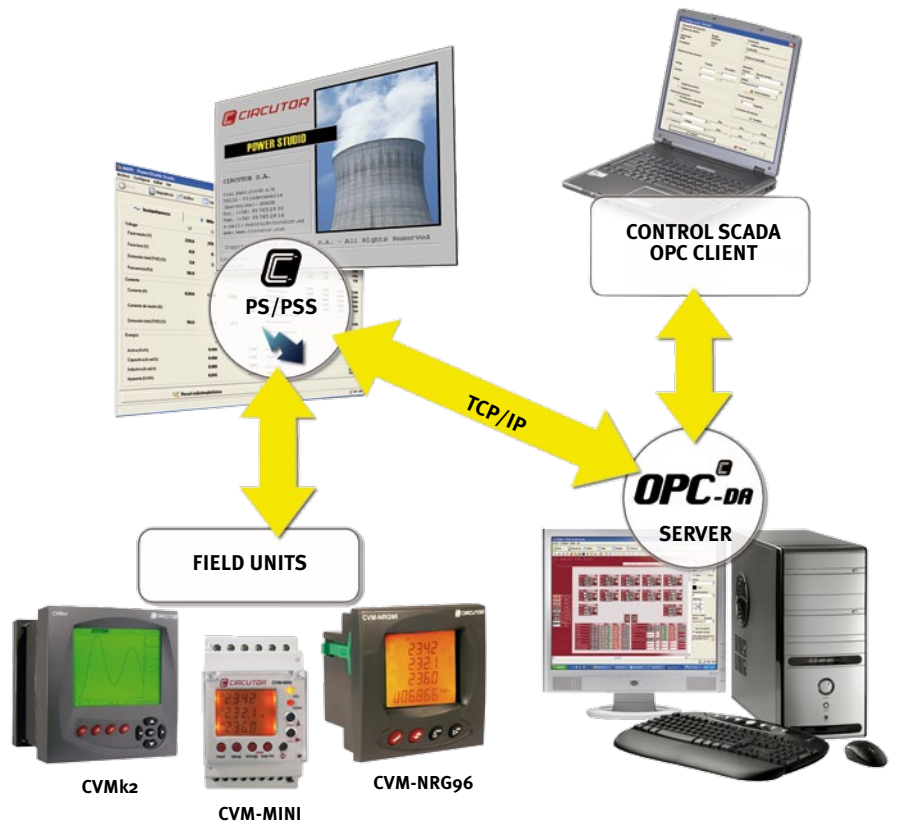


## Features

Much of the time, the data collected by the **Power Studio / Scada / Deluxe** software is designed to integrate in a global management SCADA where, as well as integrating electrical parameters, other magnitudes necessary to control a building, industry or intervention are involved. Therefore, since the most generic SCADAs in the market use OPC communications, an OPC Server has been designed with the purpose of integrating the data in external control systems.

The operating system takes into account the implementation of **Power Studio / Scada / Deluxe**, with the purpose of including the data in the system. With this reading, **OPC Server** (which can be installed on the same unit or any other unit with IP accessibility) acquires the data and serves it in the OPC format to an external application. The OPC implemented is of the DA type, therefore the data that can be served is real-time data.

Possible network topologies can be very diverse, thanks to the versatility of the connections of **Power Studio Scada**.



## References

Type	Code
OPC Server PowerStudio / PowerStudio Scada	M91111

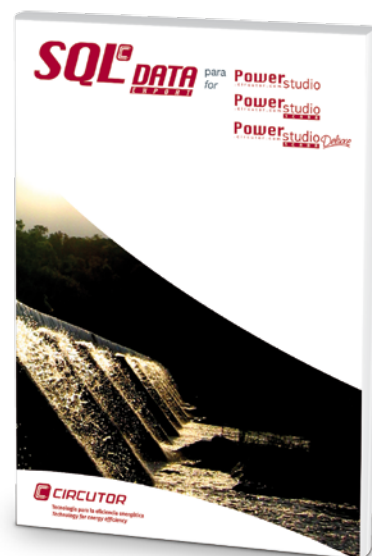


Software

# SQL Data Export PS/PSS/PSSD

integration of the data from PowerStudio in  
SQL database

## SQL<sup>®</sup> DATA EXPORT



### Features

**SQL Data Export for PS/PSS/PSSD** is a *software* tool for integrating **PS/PSS/PSSD** data into a new or existing SQL type database. With **SQL Data Export** the user can integrate, by SQL queries, the data from field equipment connected to the supervision system.

**SQL Data Export** connects to the **PS/PSS/PSSD** system by means of an IP connection, thereby facilitating the installation of the SQL export *software* in the most appropriate computer for the consulting or data integration project.

- Export of historical data in **/PSS/PSSD** to SQL type databases.
- Option of selecting devices or databases to be exported
- Programming the discharge frequency
- Multiple architectures

### References

Type	Code
SQL Data Export PowerStudio / PowerStudio Scada	M91301