

SHMOnline Meter Bureau Service

Summary

A flexible, low cost remote meter reading service, suitable for billing meters.

- ◆ Reads meters using wireless connection to the internet.
- ◆ Reads electricity, water or gas meters.
- ◆ The readings can then be viewed through the internet at any time.
- ◆ The readings are presented as tables, graphs, or as emails which can be sent from the service to a specified email account.
- ◆ Security ensures that a customer can see only their own data.
- ◆ Bills can be sent via email to the customer.

Features

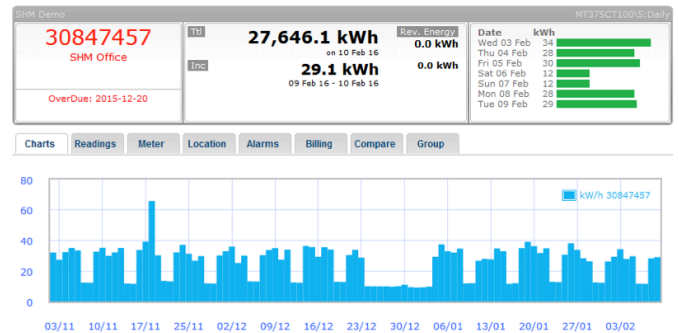
The service can be 1/2 hourly, daily, weekly or monthly. The sample screens shown are from a daily service.

You can see:

- ◆ Most recent reading.
- ◆ Three month view as graph.
- ◆ Multi-tariff – day/night.
- ◆ Readings as a table – can be saved as a CSV file.
- ◆ Meter readings can be sent as email – customer defines the email addresses.
- ◆ Energy consumption analysis for comparisons for two periods – day to day, week to week, month to month, year to year.
- ◆ Billing (which can be automated).

Sample screens

Meter consumption and the last three months history.



Readings as a table

| Start Date | Reading | Incremental Value | kWh | End Date | End Rdg |
|------------|----------|-------------------|-------|----------|----------|
| 09-02-16 | 27617 | | 29.10 | 10-02-16 | 27646.1 |
| 08-02-16 | 27588.7 | | 28.30 | 09-02-16 | 27617 |
| 07-02-16 | 27577.14 | | 11.56 | 08-02-16 | 27588.7 |
| 06-02-16 | 27565.42 | | 11.72 | 07-02-16 | 27577.14 |
| 05-02-16 | 27535.76 | | 29.66 | 06-02-16 | 27565.42 |
| 04-02-16 | 27507.92 | | 27.84 | 05-02-16 | 27535.76 |

Configure bills (only with the admin password)



The screenshot shows the 'Billing/Statements' configuration page. A 'Manage Your Billing' dialog box is open, allowing the user to 'Create Interim Statement'. The dialog shows the last bill to date as 01 Feb 16 and the next bill date as 01 Mar 2016. It also allows setting an 'Admin Charge for this bill' to 1.00 and selecting a date for the interim statement.

Setting up automatic reports



The screenshot shows the 'Settings - CSV Data Reports' configuration page. It includes fields for 'Email CSV report to:' with email addresses @shmmcomms.co.uk and @sidrat.co.uk, and a 'CSV Data Frequency:' dropdown set to 'Daily'. A note states: 'Note: Weekly reports are created on Mondays and monthly reports are created on the 1st of the month.'

Analysis

Analysis allows you to compare consumption over time, and importantly, you can scale it to kg of CO₂, or £ to make the values more accessible to the layman. See the following sample analysis screen.

Energy Consumption Analysis

Compare readings from with readings from

Select Units/Interval Units/Hr Units/Day

Meter: **K09D00521** Location: **PV001** Meter Type: **Electricity** Service: **Monthly**

Comparison in Units/Hr

Last Month

Current 4.9 ↓ -39.7%
Previous 8.2 ↓ -3.2 kWh/Hr

Last Quarter

Current 7.7 ↑ * 0%
Previous ↑ * 0%

Last Year

Current 2.9 ↑ * 0%
Previous ↑ * 0%

[Click here to email us your comments on this feature.](#)

| From - To | Period | % Change | Units Used | Avg kWh/Hr | Cost T1 | Cost T2 | Cost Ttl | KgCO2 |
|-------------------------------|---------|----------|------------|------------|---------|---------|----------|--------|
| Sun 01 Sep 13 - Tue 01 Oct 13 | Month | ↓ -39.7 | 3545 | 4.9 | £0.00 | £0.00 | £0.00 | 1,773 |
| Thu 01 Aug 13 - Sun 01 Sep 13 | Month | | 5875 | 8.2 | £0.00 | £0.00 | £0.00 | 2,938 |
| Value of Reduction | | | | | | | -£0.00 | -1,165 |
| Mon 01 Jul 13 - Tue 01 Oct 13 | Quarter | ↑ N/A | 16973 | 7.7 | £0.00 | £0.00 | £0.00 | 8,487 |
| N/A - Mon 01 Jul 13 | | | | | | | | |
| Value of Reduction | | | | | | | -£0.00 | 8,487 |
| - Tue 01 Oct 13 | Year | ↑ N/A | 25362 | 2.9 | £0.00 | £0.00 | £0.00 | 12,681 |
| N/A - N/A | | | | | | | | |
| Value of Reduction | | | | | | | -£0.00 | 12,681 |

Tariff1 = £0.100/unit Tariff2 = £0.060/unit kgCO2 = 0.500/unit

Calculations

You can set CO2 and £ values for reports

Supported Meters

A range of single and three phase meters can be used, and either Direct connected, or CT connected. All are suitable for billing (MID approved). The meters below are supported at the time of writing, but contact SHM for latest information.

| SHM Code | SHM Website | Description |
|-------------|-------------|-----------------------|
| ME372 | ISKRA ME372 | 100A single phase |
| EDMIMK7CP | EDMI Mk7 | 100A single phase |
| MT375SMSDC | ISKRA 375 | Direct connect 3phase |
| MT382DC | MT382DC | Direct connect 3phase |
| EDMIMK10ADC | EDMI Mk10 | Direct connect 3phase |
| MT375SMSCT | ISKRA 375 | CT connect 3phase |
| MT382CT | MT382CT | CT connect 3phase |
| EDMIMK10ACT | EDMI Mk10 | CT connect 3phase |

For gas and water meters, we use the ISKRA P2G battery powered data logger. Please call SHM for details.

Demo

To trial the system, go to www.shmmetering.co.uk and click on 'Systems, SHMOnline'. There you will see login and password to access a live meter. The owner of the meter can set up the properties of the meter, set-up reports and billings, and check the account status.

Order specifications

| SHM Stock Code | Description |
|----------------|--|
| SHMOPR | Daily read 1/2 hour profile for renewables and billing |
| SHMOD | One reading per day, midnight or shortly after |
| SHMOW | One reading per week, at the end of the week |
| SHMOM | One reading per month, at the end of the month |

Page 2

Br_SHMOnline (Mar 2016)